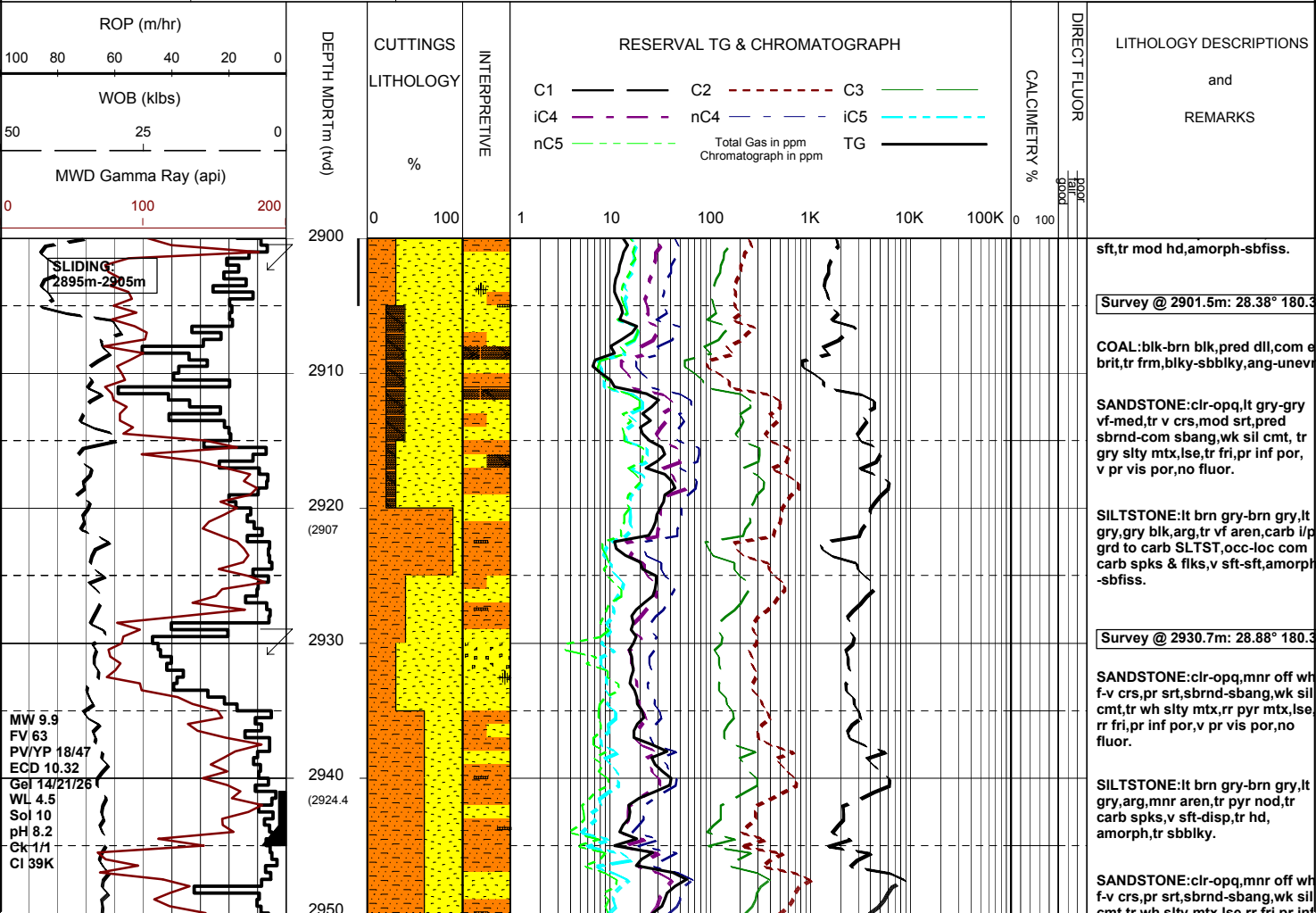


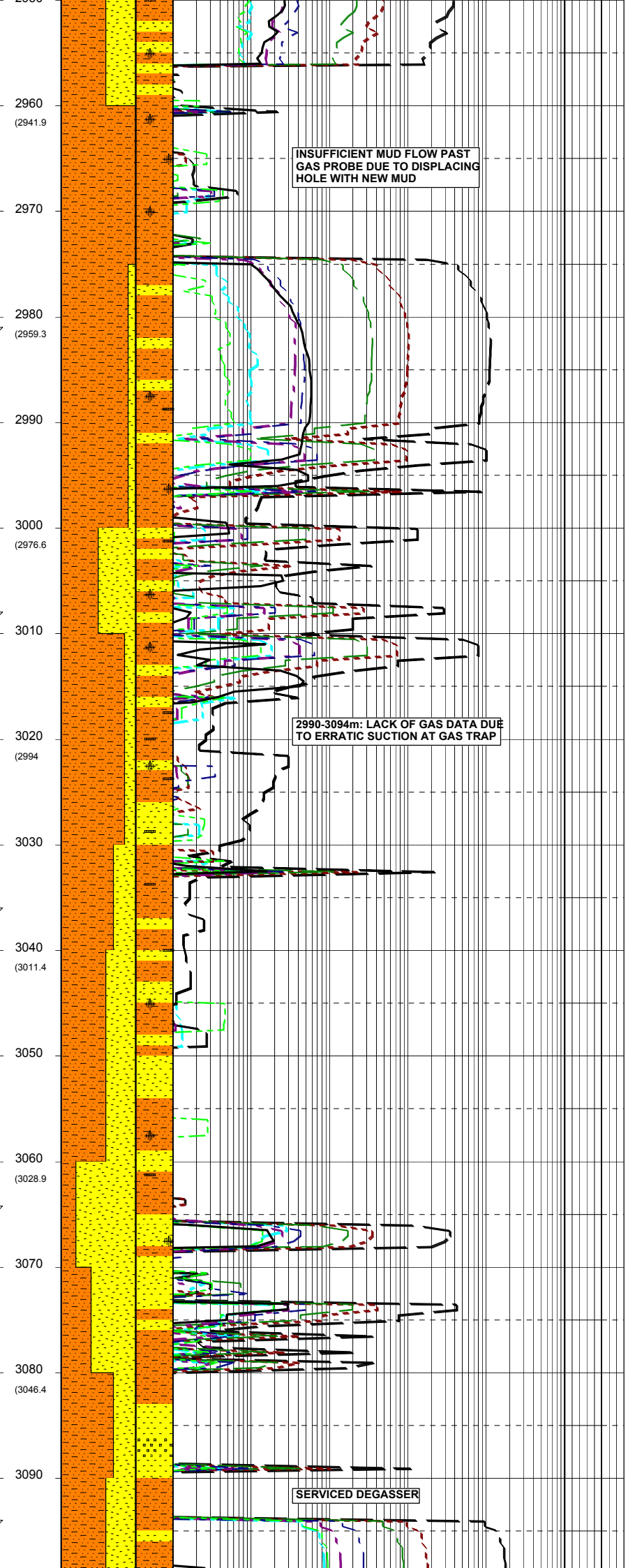
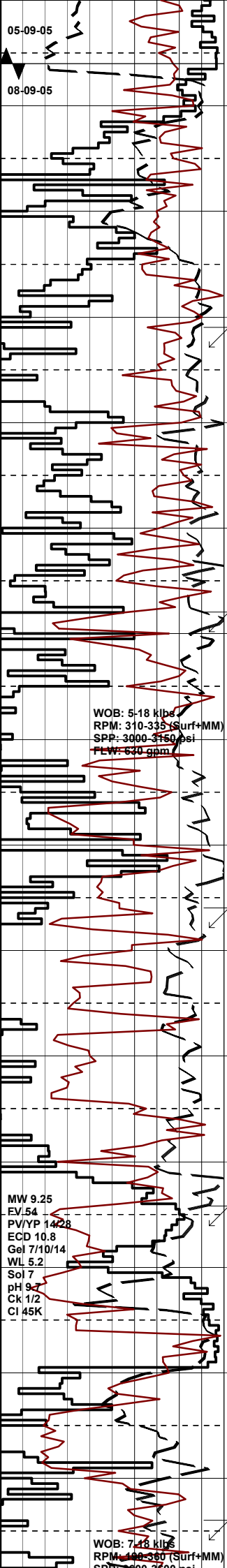
MASTERLOG

BASKER 2

GENERAL	POSITION	HOLE / CASING INFO	DATE / DEPTH	ENGINEERS
Country : AUSTRALIA	Latitude : 38°17'58.51"S	17 1/2" Hole to (mMDRT): 1006	Spud Date : 14-08-2005	D. ADDERLEY
Permit : VIC RL6	Longitude : 148°42'24.72"E	12 1/4" Hole to (mMDRT) :	Total Depth Date :	A. DUNN
Field : BASKER	UTM Co-ord X (m E): 649251.9	8 1/2" Hole to (mMDRT) :	Total Depth (mMDRT):	S. RAJA
Basin : GIPPSLAND	UTM Co-ord Y (m N): 5759566	30" Conductor @ (mMDRT) : 208	True Vertical Depth (mTVDSS):	P. RADY
Well Type : APPRAISAL	RT to MSL (m): 21.5	13 3/8" Shoe @ (mMDRT) : 1000	Log Scale : 1/ 500	
Rig Name : Ocean Patriot	RT to Sea Bed (m): 174	9 5/8" Shoe @ (mMDRT) :	Final Status :	

ABBREVIATIONS	LITHOLOGY LEGEND	ENGINEERING LEGEND
MW Mud Weight FV Funnel Viscosity PV Plastic Viscosity YP Yield Point Gel Gel Strength WL Water Loss KCl Potassium Chloride Cl Chlorides Incl Inclination Az Azimuth	<p>WOB Weight on Bit (klbs) RPM Rotations Per Min FLW Flow Rate (gpm) SPP Pump Pressure (psi) RR Re-Run Bit TG Trip Gas CG Connection Gas BG Background Gas DGP Drilled Gas Peak MM Mud Motor</p> <p>Marl Clay, Sand Lime do. Shale ca. Shale sandy Shale si. Claystone</p> <p>Quartzite ar. Sandstone bitum. Shale (b) Claystone Fine SST sa. Shale</p> <p>Siltstone f to vf Sand f Fossils Algae Lithic Fragment Belemnits</p> <p>Rudists Sponges Sporomorphs Tigillites Vertebrates Wood silicified</p>	<p>Essai non concl Aucun fluide re TEST Test Filtrat Deviation curve Mud gain Boue</p> <p>Mud loss RFT FIT DST Cement</p>





05-09-05

08-09-05

2960 (2941.9)

2970

2980 (2959.3)

2990

3000 (2976.6)

3010

3020 (2994)

3030

3040 (3011.4)

3050

3060 (3028.9)

3070

3080 (3046.4)

3090

9.625" CASING SET @ 2945m

Rmf @ 2956m: 0.12 ohm @ 75°F

LOT at 2959m : EMW=13.1ppg

BIT #6 SECURITY FM3743,
 SIZE: 8.5" JETS: 3x18 3x22
 IN: 2956m OUT: 3310m
 RUN: 354m HRS: 14.2
 COND: 1-4-WT-S-X-1/16-CT-WQ

SILTSTONE: brn gry-lt gry, tr wh, occ arg slt, tr pry nod, tr carb spks, v sft-mod hd, tr disp, sbbkly-blky

SANDSTONE: clr-opq, mnr off wh vf-f, mod srt, sbang-sbrnd, wk calc cmt, lse-fri, v pr inf por, mnr dll org calc fluor.

Survey @ 2981.0m: 28.88° 180.3

SANDSTONE: clr-opq, mnr off wh vf-f, mod srt, sbang-sbrnd, wk calc cmt, lse-fri, v pr inf por, mnr dll org calc fluor.

Survey @ 3009.9m: 29.88° 180.0

SANDSTONE: clr-opq, mnr off wh vf-f, mod srt, sbang-sbrnd, wk calc cmt, lse-fri, v pr inf por, mnr dll org calc fluor.

SILTSTONE: brn gry-lt gry, occ arg slt, tr pry nod, tr carb spks, tr arg mx, tr disp, frm-mod hd, blkly-sbbkly.

SANDSTONE: clr-opq, v f-v crs, pr srt, ang-sbrnd, lse, fr-gd inf por

Survey @ 3038.5m: 29.08° 178.9

SILTSTONE: brn gry-lt gry, occ arg slt, tr pry nod, tr carb spks, tr arg mx, tr disp, frm-mod hd, blkly-sbbkly.

SANDSTONE: opq-clr, tr wh, v crs-f, pr srt, sbang-sbrnd, tr calc cmt, lse-fri, fr-gd inf por, mnr dll org calc fluor.

Survey @ 3066.6m: 28.66° 178.4

SILTSTONE: brn gry-lt gry, occ arg slt, tr pry nod, tr carb spks, tr arg mx, tr disp, frm-mod hd, blkly-sbbkly.

SANDSTONE: opq-clr, tr wh, v crs-f, pr srt, sbang-sbrnd, tr calc cmt, lse-fri, fr-gd inf por, mnr dll org calc fluor.

SANDSTONE: clr-trns, vf-pred f, tr crs, mod srt, sbrnd-sbang, tr sil cmt, tr pry nod, fri-occ mod hd, occ lse, prvis por, pr-fr inf por, no fluor.

SILTSTONE: brn-dk brn, lt gry, lt gry brn, tr aren i/p, com carb lam frags, tr nod pry, tr micmic, sft-fm

INSUFFICIENT MUD FLOW PAST GAS PROBE DUE TO DISPLACING HOLE WITH NEW MUD

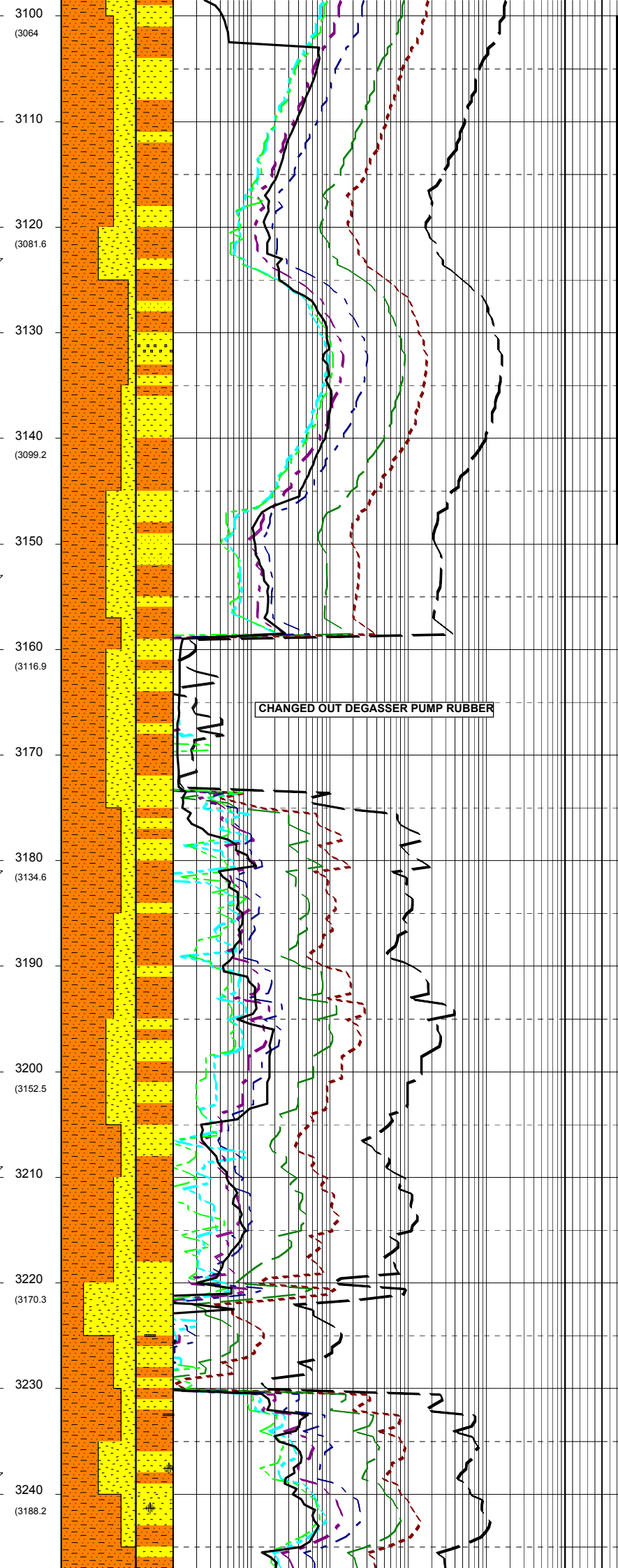
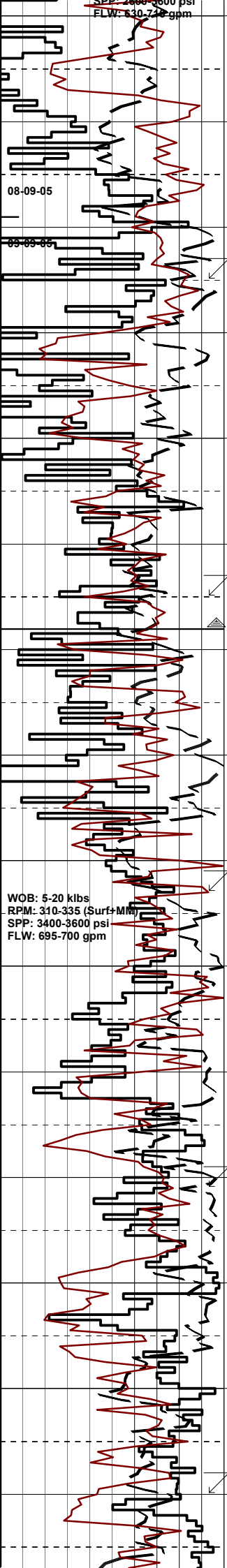
2990-3094m: LACK OF GAS DATA DUE TO ERRATIC SUCTION AT GAS TRAP

WOB: 5-18 kips
 RPM: 310-335 (Surf+MM)
 SPP: 3000-3150 psi
 FLW: 630 gpm

WOB: 7-18 kips
 RPM: 400-360 (Surf+MM)
 SPP: 3000-3150 psi
 FLW: 630 gpm

MW 9.25
 EV.54
 PV/YP 1428
 ECD 10.8
 Gel 7/10/14
 WL 5.2
 Sol 7
 pH 9.4
 Ck 1/2
 Cl 45K

SERVICED DEGASSER



CHANGED OUT DEGASSER PUMP RUBBER

occ mod hd,sbbkly.

Survey @ 3095.3m: 28.69° 178.5

SANDSTONE:clr-trnsl,f-med,tr c
pr-mod srt,sbrnd-sbang,tr sil cm
tr-com wh-lt brn arg mtx,tr nod
pyr,tr micmic,fri-occ mod hd,tr
lse,v pr-pr vis por in f aggs,
pr-fr inf por in loose component
tr fluor.

SILTSTONE:lt brn-brn,brn gry,lt
gry i/p,aren,tr carb frags & lams,
nod pyr,tr micmic,sft-frm,sbbkly
sbfiss.

FLUOR:3100m-3150m;T
Tr dll lt grn,no cut
no c/c,no fr.

Survey @ 3123m: 28.01° 177A2

SANDSTONE:clr-trnsl,wh,opq,vf
f (aggs),tr crs (lse),pr srt,sbrnd-
sbang,tr sil cmt,tr lt gry/lt
brn argmtx,tr nod pyr tr carb spk
fri,pred lse,pr vis por in aggs,
pr-fr inf porin lse component,
tr fluor.

SILTSTONE:brn/dk brn,dk brn g
aren grd vf SST i/p,grd to CARB
i/p,tr carb lams & frags,sft-frm,
sbfiss-sbbkly.

Survey @ 3153.2m: 27.87° 176.2

Back ream to casing shoe

SILTSTONE:lt brn/brn,brn gry,
aren i/p,tr carb lams & frags,
frm,occ mod hd,sbfiss-sbbkly.

SANDSTONE:clr-trnsl,off wh,op
f-crs,pr srt,sbang-sbrnd,com sil
cmt,com wh-ltbrn arg mtx,tr qtz
ovgths,tr carb spks,fri,uncons
i/p,com lse,pr vis por with aggs,
pr-fr por assoc with lse grs,
no fluor.

SILTSTONE:lt brn/brn,lt brn gry,
aren,com carb lams & frags,tr
pyr,sft-frm,sbbkly.

Survey @ 3181.8m: 27.45° 174.9

SANDSTONE:clr,tnsl,opq,f-med
mod srt,sbrnd-sbang,tr-com sil
cmt,com lt brn/wharg mtx,tr carb
spks,tr pyr,fri,pred lse,pr vis
por,pr-fr inf por,no fluor.

SILTSTONE:lt brn/brn,lt brn gry,
aren,com carb lams & frags,rr
pyr,sft-frm,sbbkly.

SANDSTONE:clr-trnsl,f-crs,pr
srt,sbrnd sbang,tr dol & pyritic s
cmt,lr lt brn arg mtx,tr carb spks
pred lse,occ fri aggs,pr vis por,
pr-fr inf por,no fluor.

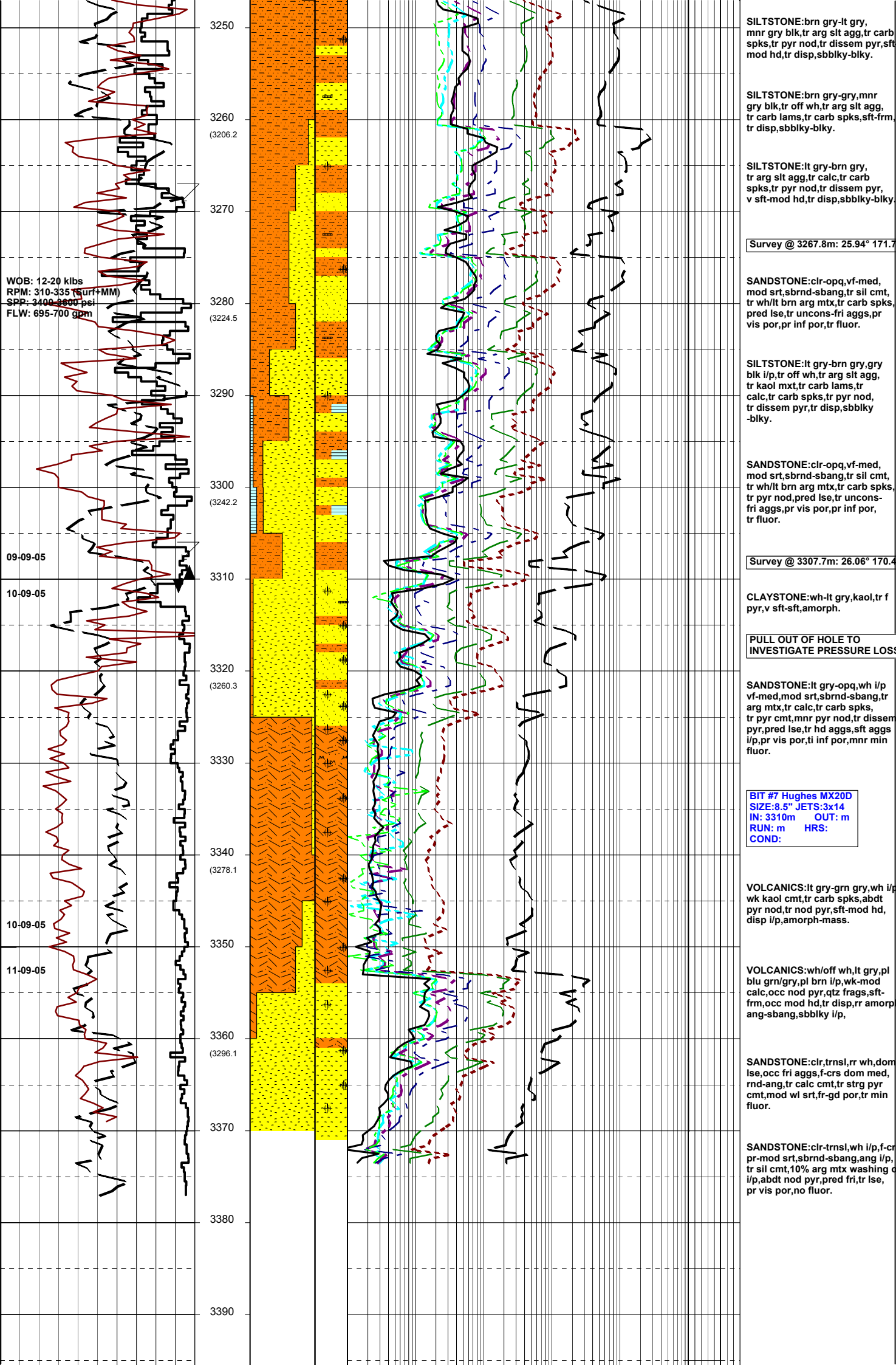
Survey @ 3210.1m: 26.65° 173.9

SANDSTONE:clr-trnsl,f-crs,pr
srt,sbrnd-sbang,rr dol cmt,tr sil
cmt,lr lt brn/wh arg mtx,pr sil
carb spks,pred lse,uncons-fri,pr
vis por,pr-fr inf por,no fluor.

SILTSTONE:brn/pred dk brn,brn
gry i/p,aren i/p,grd to CARB
SLTST i/p,com carb spks &
lams,sft,sbbkly-sbfiss.

Survey @ 3238.5m: 26.31° 172.3

SANDSTONE:clr-trnsl,opq,f-crs,
pr srt,pred sbrnd-sbang,tr sil
cmt,lr wh/lt brn arg mtx,pr carb
spks,pred lse,pr uncons-fri aggs,
pr vis por,pr-fr inf por,fr fluor.



SILTSTONE:brn gry-lt gry, mnr gry blk, tr arg slit agg, tr carb spks, tr pyr nod, tr disse pyr, sft mod hd, tr disp, sbblky-blky.

SILTSTONE:brn gry-gry, mnr gry blk, tr off wh, tr arg slit agg, tr carb lams, tr carb spks, sft-fr, tr disp, sbblky-blky.

SILTSTONE:lt gry-brn gry, tr arg slit agg, tr calc, tr carb spks, tr pyr nod, tr disse pyr, v sft-mod hd, tr disp, sbblky-blky.

Survey @ 3267.8m: 25.94° 171.7

SANDSTONE:clr-opq,vf-med, mod srt,sbrnd-sbang, tr sil cmt, tr wh/lt brn arg mtx, tr carb spks, pred lse, tr unconc-fri aggs, pr vis por, pr inf por, tr fluor.

SILTSTONE:lt gry-brn gry, gry blk i/p, tr off wh, tr arg slit agg, tr kaol mx, tr carb lams, tr calc, tr carb spks, tr pyr nod, tr disse pyr, tr disp, sbblky-blky.

SANDSTONE:clr-opq,vf-med, mod srt,sbrnd-sbang, tr sil cmt, tr wh/lt brn arg mtx, tr carb spks, tr pyr nod, pred lse, tr unconc-fri aggs, pr vis por, pr inf por, tr fluor.

Survey @ 3307.7m: 26.06° 170.4

CLAYSTONE:wh-lt gry,kaol, tr f pyr, v sft-sft, amorph.

PULL OUT OF HOLE TO INVESTIGATE PRESSURE LOSS

SANDSTONE:lt gry-opq,wh i/p vf-med,mod srt,sbrnd-sbang, tr arg mtx, tr calc, tr carb spks, tr pyr cmt, mnr pyr nod, tr disse pyr, pred lse, tr hd aggs, sft aggs i/p, pr vis por, ti inf por, mnr min fluor.

BIT #7 Hughes MX20D
 SIZE: 8.5" JETS: 3x14
 IN: 3310m OUT: 1m
 RUN: m HRS:
 COND:

VOLCANICS:lt gry-grn gry, wh i/p wk kaol cmt, tr carb spks, abdt pyr nod, tr nod pyr, sft-mod hd, disp i/p, amorph-mass.

VOLCANICS:wh/off wh, lt gry, pl blu grn/gry, pl brn i/p, wk-mod calc, occ nod pyr, qtz frags, sft-fr, occ mod hd, tr disp, rr amorp ang-sbang, sbblky i/p,

SANDSTONE:clr, trnsl, rr wh, dom lse, occ fri aggs, f-crs dom med, rmd-ang, tr calc cmt, tr strg pyr cmt, mod wl srt, fr-gd por, tr min fluor.

SANDSTONE:clr-trnsl, wh i/p, f-cr pr-mod srt,sbrnd-sbang, ang i/p, tr sil cmt, 10% arg mtx washing i/p, abdt nod pyr, pred fri, tr lse, pr vis por, no fluor.

